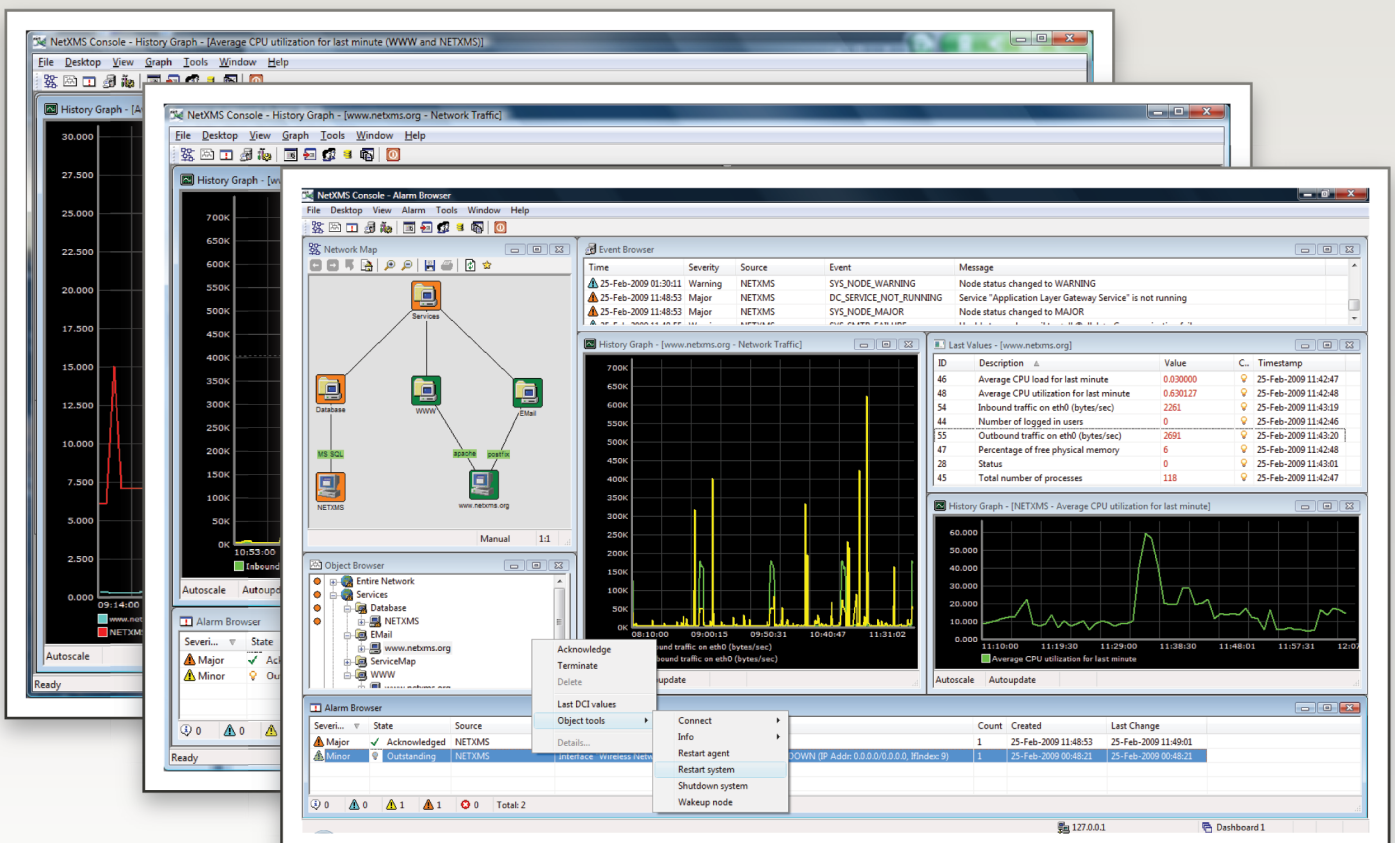




NetXMS is an enterprise grade multi-platform open source network management and monitoring system. It provides comprehensive event management, performance monitoring, alerting, reporting and graphing for all layers of IT infrastructure — from network devices to business application layer.

Feature highlights:

- ▶ Unified platform for management and monitoring of the entire IT infrastructure
- ▶ Designed for maximum performance and scalability
- ▶ Distributed network monitoring
- ▶ Automated network discovery
- ▶ Flexible and easy to use event processing
- ▶ Business impact analysis tools
- ▶ Quick deployment with minimal configuration efforts
- ▶ Easy and simple integration with related products
- ▶ Native support for many popular platforms and operating systems



Feature overview

General

- ▶ Single unified platform for management and monitoring of entire IT infrastructure – from network switches and routers to applications
- ▶ Automated network discovery for OSI layers 2 and 3
- ▶ Data collection either from SNMP or from native NetXMS agent
- ▶ Flexible threshold system for collected data
- ▶ Flexible policy-based event processing
- ▶ Configurable actions for events, including:
 - One or more alarms for operators
 - Command execution on management server or on remote host via NetXMS agent
 - SMS and e-mail alerts
 - Event forwarding (to another NetXMS server or external system)
- ▶ Event correlation rules to reduce number of alerts and increase problem resolution speed
- ▶ Template-based data collection configuration for simplified management of large networks
- ▶ Template-based sets of actions (e.g. finish or restart specific process for any Windows or Linux based PC, reboot for any device type etc.)
- ▶ Service dependency tree to map infrastructure elements to business services
- ▶ Support for SNMP versions 1, 2c, 3
- ▶ Built-in scripting engine for advanced automation and management

User interface

- ▶ User-friendly Windows and Unix GUI management console
- ▶ Graphical network maps (both automatic and manually adjustable)
- ▶ Configurable dashboards by user roles (e.g. operator, administrator, manager etc)

Integration

- ▶ Native C and Java APIs for rapid development of custom client applications
- ▶ Nagios plug-in compatibility (most Nagios plug-ins work out-of-box with NetXMS)
- ▶ Modular server and agent structure (server or agent can be extended with additional modules – third-party or in-house)
- ▶ Built-in interface with helpdesk system

Security

- ▶ Authentication with passwords, X.509 certificates, smart cards or RADIUS server
- ▶ Access control configuration - user and group rights for every system function
- ▶ High-strength industry-standard algorithms for protocol encryption

NetXMS agent

- ▶ Centralized configuration and upgrades
- ▶ Low system resource usage
- ▶ Proxy mode for other NetXMS agents and SNMP devices
- ▶ Firewall-friendly communications

Technical information

Supported operating systems for NetXMS server

- ▶ Windows 2000, Windows XP, Windows Server 2003, Windows Vista, Windows Server 2008
- ▶ RedHat Enterprise Linux, SUSE Linux, CentOS, Debian Linux, Ubuntu Linux Server Edition
- ▶ FreeBSD, NetBSD, OpenBSD
- ▶ Solaris
- ▶ HP-UX

Supported DBMS engines for NetXMS server

- ▶ Microsoft SQL
- ▶ MySQL
- ▶ Oracle
- ▶ PostgreSQL
- ▶ SQLite

Supported operating systems for NetXMS agent

- ▶ Windows NT 4.0, Windows 2000, Windows XP, Windows Server 2003, Windows Vista, Windows Server 2008, Windows 7 Beta
- ▶ Windows 95/98/ME (limited support)
- ▶ Linux (all glibc2-based flavors)
- ▶ FreeBSD, NetBSD, OpenBSD
- ▶ Solaris
- ▶ HP-UX
- ▶ AIX
- ▶ IPSO
- ▶ NetWare

Raden Solutions

Ropazu 48/50,
Riga, LV-1006,
Latvia

Phone: +371 22 08 52 21
E-mail: info@radensolutions.com

